



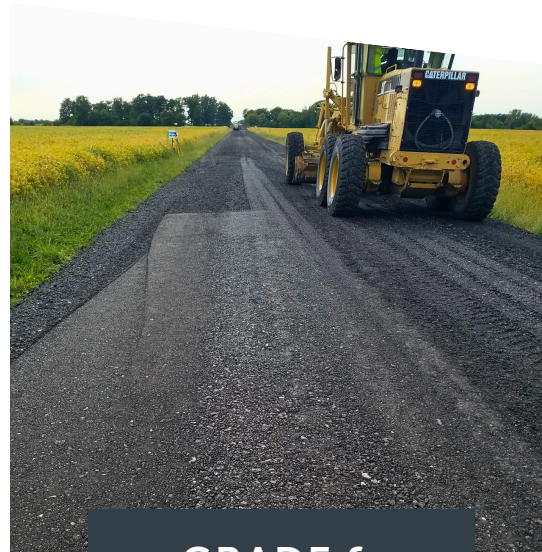
## AMICYCLE™ Full Depth Reclamation (FDR)



**CRUSH**



**MIX**



**GRADE &  
COMPACT**



AMICYCLE™

# Full Depth Reclamation

AMICYCLE Full Depth Reclamation (FDR) is a widely used engineered rehabilitation technique typically used on pavements that need major structural upgrades or contain full-depth or deeper structural distresses. The treatment may be used as an economical alternative to full reconstruction or remove and replace methods.

## Benefits

- Roads can be rebuilt more quickly with FDR than conventional reconstruction - reducing inconvenience to the motoring public.
- FDR treatments have the ability to widen existing pavements and improve cross-slope when needed.
- By re-using the materials already within the pavement structure, FDR provides all the benefits of traditional reconstruction without excessive transport costs of removal and replacement. This results in cost savings and a reduction in environmental impact.



## The Process

A reclaimer pulverizes the existing asphalt pavement along with a specified amount of the underlying base material, up to 10 inches in depth. Next, engineered emulsion and often other supplements are blended with the pulverized materials. The new base is then shaped by a motor grader to the proper profile and compacted. A new asphalt surface treatment or wearing course can then be added.

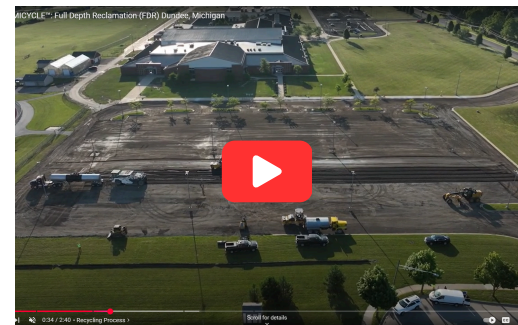
## Frequently Asked Questions

### Will I be limited by distance from a supplier?

No, special hauling conditions are not required for this type of technique. Engineered emulsions can be supplied throughout the Midwest from AMI facilities.

### What type of road is a good candidate for FDR?

Roads in poor service condition with severe distresses are good candidates for FDR. Typical FDR techniques treat up to a depth of 10 inches.



Check out how Dundee, Michigan, utilized Full Depth Reclamation to rehabilitate Dundee High School's parking lot.



## MORE AMI PRODUCTS



A pavement sampling investigation should be done to determine the proper treatment for a particular road. Reach out to your AMI representative to discuss an evaluation.

Contact your AMI sales rep or email [marketing@asphalt-materials.com](mailto:marketing@asphalt-materials.com) 050726

