

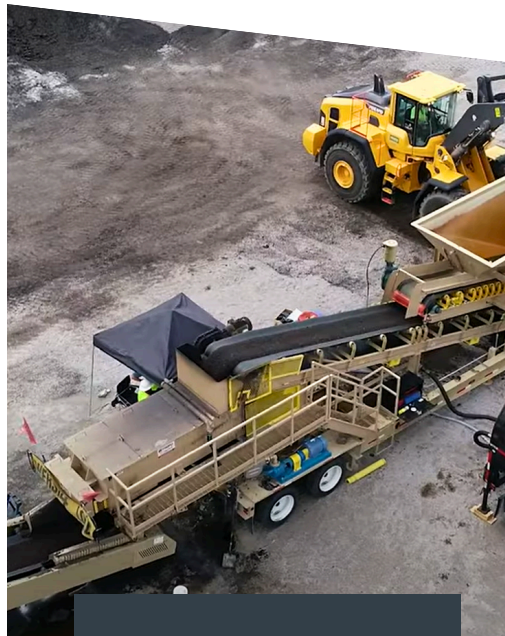


AMICYCLE™

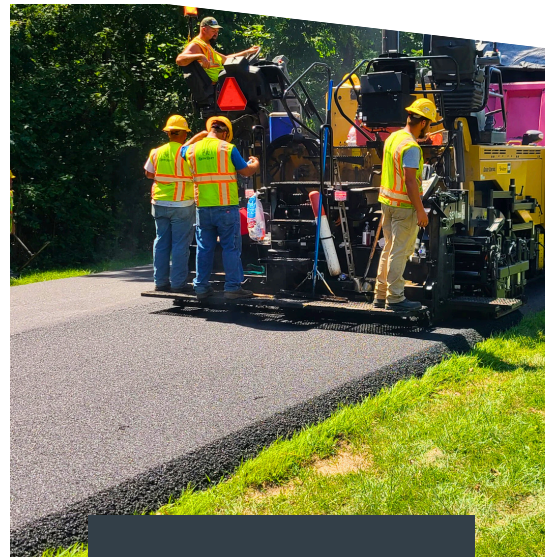
Cold Central Plant Recycling (CCPR)



STOCKPILE



MIX



PAVE



AMICYCLE™

Cold Central Plant Recycling

AMICYCLE CCPR is an environmentally friendly solution for repairing distressed roadways. This process allows for the removal of the asphalt pavement and treatment of underlying conditions such as yielding subgrades or damaged subbase. This modern, yet well-established engineering method allows agencies and owners to perform deeper repairs and reuse existing asphalt materials as an intermediate or base course making it more economical than conventional reconstruction.

Benefits

- CCPR is more cost-effective to produce and pave than conventional asphalt because it utilizes pre-existing materials.
- CCPR can be used to increase pavement structure because the process lends itself to being placed in multiple lifts.
- CCPR can be combined with more invasive treatments like subgrade stabilization and still reuse the existing asphalt pavement.



The Process

Cold Central Plant Recycling (CCPR) is the process which takes place at a central location using a mobile mixing plant and stockpile of processed Reclaimed Asphalt Pavement (RAP). The RAP is mixed with an engineered emulsion and transported to the project site where it is placed and compacted with conventional paving equipment in lifts ranging from 3 to 6 inches in thickness. After curing, an asphalt surface treatment or wearing course is then added.

Frequently Asked Questions

How can CCPR help a road program with a limited budget?

When RAP is sourced directly from the roadway that will be rehabilitated, the central plant location can be selected to shorten haul distances and save on transport costs. Agencies may also use stockpiles they have collected over time, saving on milling and processing costs.

Will I be limited by distance from a supplier?

No, special hauling conditions are not required for this type of technique. Engineered emulsions can be supplied throughout the Midwest from AMI facilities.



Check out how the Cold Central Place Recycling process can improve the structure and profile of new pavements.



MORE AMI PRODUCTS



A pavement sampling investigation should be done to determine the proper treatment for a particular road. Reach out to your AMI representative to discuss an evaluation.

Contact your AMI sales rep or email marketing@asphalt-materials.com 050726

